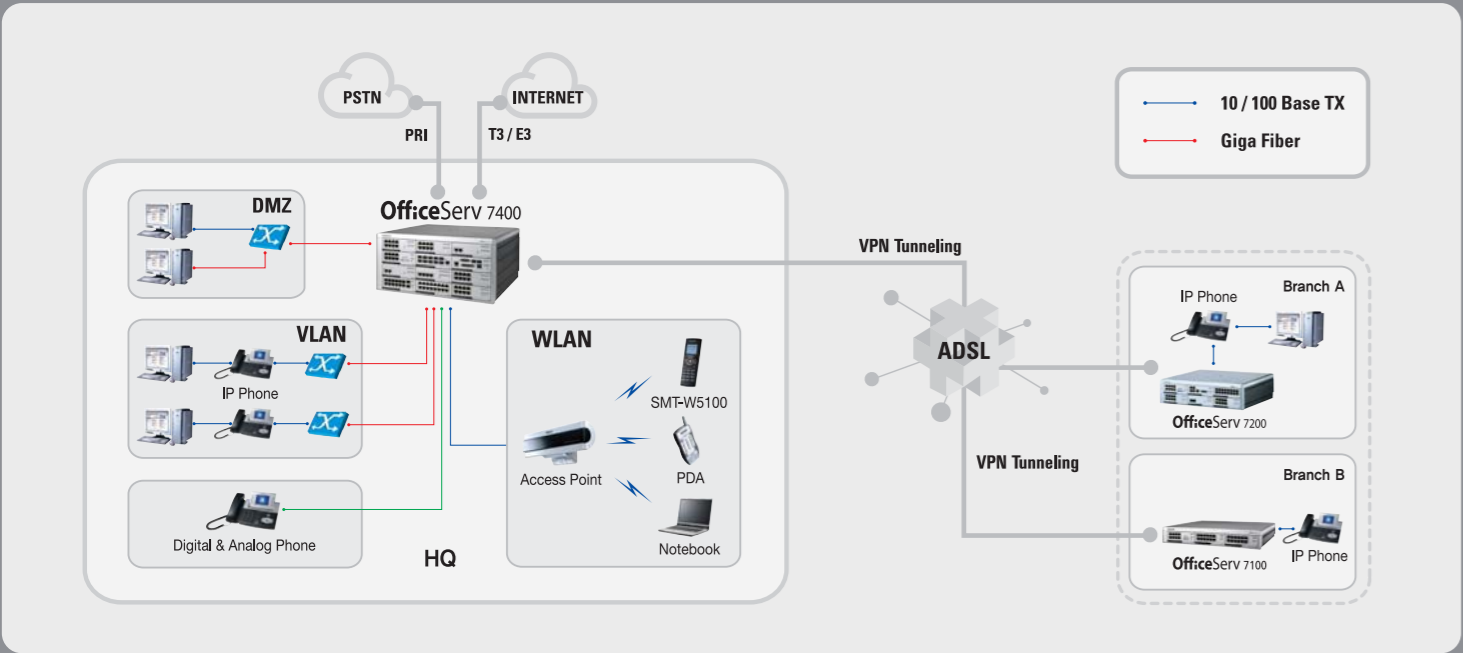


System Specification

	OfficeServ 7100	OfficeServ 7200	OfficeServ 7400
Maximum Capacity	1 Rack : Max. 32/32 voice trunks/stations, Max. 32 LAN ports(w/o PoE)	1 Rack : Max. 106/80 voice trunks/stations, Max. 80 LAN ports, Max. 20 xDSL ports, Max. 120 WLAN Phones. 2 Rack : Max. 168/160 voice trunks/stations, Max. 160 LAN ports, Max. 40 xDSL ports, Max. 120 WLAN Phones.	1 Rack : Max. 600/160 voice trunks/stations, Max. 160 LAN ports, Max. 40 xDSL ports, 192 WLAN Phone 2 Rack : Max. 930/336 voice trunks/stations, Max. 336 LAN ports, Max. 84 xDSL ports, Max. 192 WLAN Phones. 3 Rack : Max. 1260/512 voice trunks/stations, Max. 512 LAN ports, Max. 128 xDSL ports, Max. 192 WLAN Phones.
Trunk	Daughter Board : 4TRM, 2BRM Compatible Board : 8TRK, TEPRI, TEPRI2, 4BRI	TEPRI, 8TRK, 4BRI	TEPRI2, TEPRI, 8TRK, 4BRI
Station	Daughter Board : 4DLM, 4SLM Compatible Board : 8DLI, 16DLI, 8SLI, 16SLI, 8COMBO	16DLI, 8DLI, 16SLI, 8SLI, 8COMBO	16DLI, 8DLI, 16SLI, 8SLI, 8COMBO
Data	4SWM : 4ports Switch Module with PoE(Daughter Board) LIM : 16ports 10/100 Ethernet (Compatible Board) MP11 : WAN port	WIM : WAN Interface Module - DMZ port, LAN port, V.35 serial port LIM : 16ports L2 Switch Module 4DSL : Long distance Ethernet ports 4. Max. 1.2Km Up/Down Link : 5Mbps	GWIM : Giga Router Module-3 Giga ports, V.35, HSSI GSIM : L3 Giga Switch Module GPLIM : Managed L2 Switch Module with PoE
Voice Application	Embedded 8ch MGI Compatible Board : MGI64 (Media Gateway Module)	MGI : Media Gateway Module WLI : WLAN Access Point Interface Module	MGI64 : 64ch Media Gateway Module WLI : WLAN Access Point Interface Module
CPU	MP10 (M82511G CSP, 375MHz), MP11 (M82810 CSP, 375MHz)	MPC855T, 50MHz	MPC8271, 266MHz
AC Input	AC : 110V(USA), 220V DC : +12V, +5V, +3.3V, -5V, -54V	AC : 110 / 220V 60Hz DC : +5V, -5V, -48V	AC : 110 / 220V 60Hz DC : +5V, -5V, -48V, 3.3V, 12V
Size	1 Rack : 440(W) x 75(H) x 410(D)mm	1 Rack : 440(W) x 123.8(H) x 410(D)mm 2 Rack : 440(W) x 247.6(H) x 410(D)mm	1 Rack : 440(W) x 223.8(H) x 410(D)mm 2 Rack : 440(W) x 447.6(H) x 410(D)mm 3 Rack : 440(W) x 671.4(H) x 410(D)mm

System Configuration

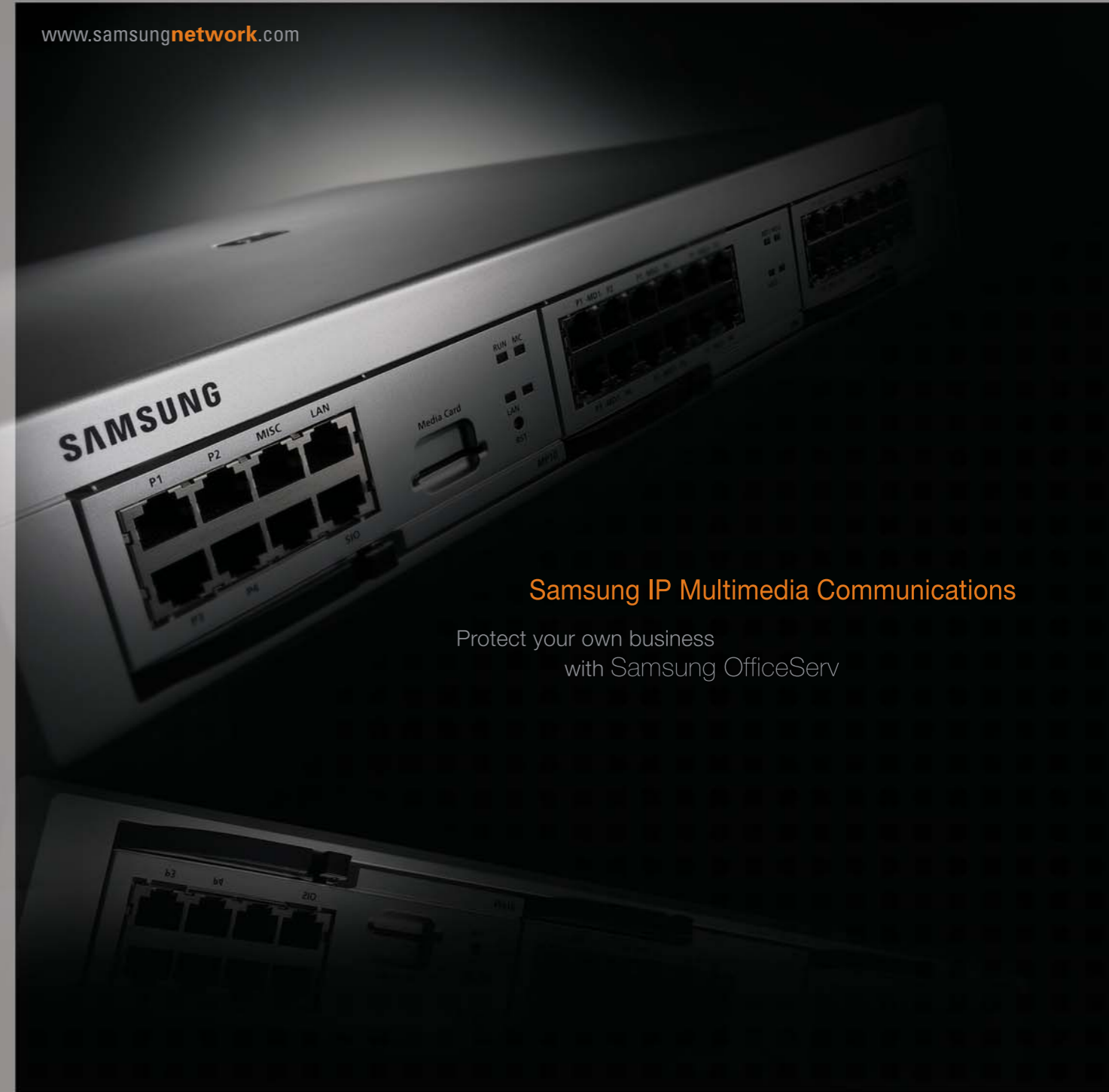


TELECOMMUNICATION NETWORK
www.samsungnetwork.com

SAMSUNG ELECTRONICS CO., LTD.

Dong Suwon P.O.BOX 105, 416, Maetan-3dong, Yeongtong-gu,
Suwon-si, Gyeonggi-do, Korea 442-600
E-mail : shawn.kang@samsung.com

*All products specification and appearance are subject to change without notification



Samsung IP Multimedia Communications

Protect your own business
with Samsung OfficeServ

imagine Convergence Market Leader

Enterprise IP Solutions **OfficeServ 7000 Series**

Communication is the driving force behind any organization and the communication infrastructure is the key asset in providing resilient and effective connections to the outside world. Convergence of communication infrastructure advances organization's capabilities and efficiencies. Samsung's expertise in wireless communications, digital technology, and core networks, combined with IP Technology, has produced the next generation Multimedia IP solution, OfficeServ



OfficeServ 7000 series, Samsung IP Convergence system's Full Line-up

Samsung IP platforms, OfficeServ 7000 series, are the ideal solution for the future and the present office because they can simultaneously support traditional voice communication, VoIP, IP-based data communication and wireless solution through WLAN. OfficeServ 7000 series provide customer with various opportunities as complete full line-up of IP Convergence system from 25 to 500 users.

OfficeServ 7000 series provide not only system expandability in combination with each other, but also compatibility between system interface boards.

Especially, OfficeServ 7400 provides secure IP telephony communication through enhanced data networking and integrated security solution.



OfficeServ 7100

- All-in-One IP convergence key system (Wired + Wireless, Voice + Data)
- 2 Universal slots within 1 cabinet, up to 32 users (7 Daughter board within 1 cabinet)
- Full PBX voice features
- Linux O/S
- Embedded 8ch MGI, 4ch VMS on Main Processor
- Router, Firewall, IDS, VPN (MP11)



Customer Inter@ction Solutions
2005 Product of the Year Award Winner



OfficeServ 7200

- All-in-One IP convergence key system (Wired + Wireless, Voice + Data)
- 10 Universal slots within 2 cabinets, up to 128 users
- Full PBX voice features
- Router, Firewall, IDS, VPN
- Voice over WLAN



OfficeServ 7400

- All-in-One IP convergence key system (Wired + Wireless, Voice + Data)
- 32 Universal slots within 3 cabinets, up to 500 users
- Full PBX voice features
- Router, Firewall, IDS, VPN
- Voice over WLAN
- Gigabit L2/3 switching, VoIPv6, T3 45Mbps Routing

Integrated communication environment

The OfficeServ 7000 series make voice calls and send / receive data by using the LAN/WAN modules. The user can use the integrated wired / wireless platform (phones, PCs, servers, mobile phones, or peripherals) to make communications easily.

IP based feature server

The OfficeServ 7000 series use an IP-based feature server to provide an IP solution, which integrate the functions of mail server, Session Initiation Protocol (SIP) server, and Voice over IP Unified Messaging Service (IP-UMS). The IP-based feature server is a Linux platform and can continuously add feature server modules to be provided in the future. Examples of the feature servers include the mobile roaming server and Authentication, Authorization, and Accounting (AAA) server.

WAN / LAN Functions

The WAN and LAN interface modules are installed in the OfficeServ 7000 series ; thus data can be sent/received via the interface of the 10/100 base T Ethernet in both the Internet and the Intranet without any data equipment.

Text-To Speech (TTS) Responses

The OfficeServ 7000 series convert text messages such as e-mails to voice messages and allow the users to listen to the messages through phones. Also, They recognize the voices and respond to them.

Wireless LAN, Mobility in your office

Samsung OfficeServ WLAN liberates you from the confines of your office and provides you with significant cost efficiencies because the qualified voice and data service of OfficeServ 7000 series WLAN removes needless cabling and maintenance. With its support for the SMT-W5100 WLAN phone, OfficeServ 7000 series provide full voice-data convergence not only for fixed network connections but also on Corporate Wireless LANs. Samsung's Enterprise IP Solution gives you the freedom to run high bandwidth wireless data applications along with a superior quality voice service on the same network.



SMT-W5100

- Wireless Standard : IEEE 802.11b/g
- VoIP Protocol : Standard SIP
- Voice Codec : G.711/G.729A/G.723.1
- 128 x 128, 1.5 inch LCD (65K Color)
- Talk Time : 4 hour
- Standby Time : 40 hour



SMT-R2000

- Hand-off
- Wireless Standard : IEEE 802.11a/b/g
- Voice Codec : G.711/G.729A/G.723.1
- PoE (802.3af)

Business IP phones

Diverse Samsung Business IP Phones satisfy the needs of different users in organizations and provide cost efficiency.



ITP-5112L

- 3.5" Color TFT LCD (320 x 240 pixel)
- 40 Poly Melody
- Samsung Mobile phone UI
- 2ports 10/100M LAN
- 12 Programmable Buttons
- Useful Navigation Buttons
- PoE (802.3af)
- Proprietary protocol & Standard SIP

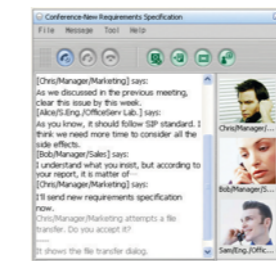


ITP-5121D/5114D/5107S

- 16 character * 2 line LCD
- 2ports LAN (5107S 1 port)
- Multiple Programmable Buttons
- Useful Navigation Buttons (5121D, 5114D)
- PoE (802.3af)
- Proprietary protocol & Standard SIP

Multimedia IP phone and Enhanced applications

The OfficeServ 7000 series offer IP Video phone and enhanced applications for Enterprise such as OfficeServ ACD, Call, Operator, IP-UMS, News, EasySet, Internet Call Center, DataView, Softphone, and Messenger.



OfficeServ Messenger

- SIP-based Multimedia Communication Solution
- Seamless Integration with OfficeServ Devices (IP Softphone, IP Phone, Digital Phone)
- Instant Messaging with Voice, Video, and Data
- Multi-Party Video Conference
- Presence-Aware with Phone status
- Data sharing, Data transferring



ITP-5100V

- IP Video phone for Enterprise
- CMOS 0.3M Pixel Camera
- 3.5" TFT Color LCD
- QVGA (320 x 240 pixel)
- VOD, Video CID
- Image Capture & Playback
- Video Codec : H.263, MPEG-4
- Navigator buttons, scroll button, and Graphics & Icons

